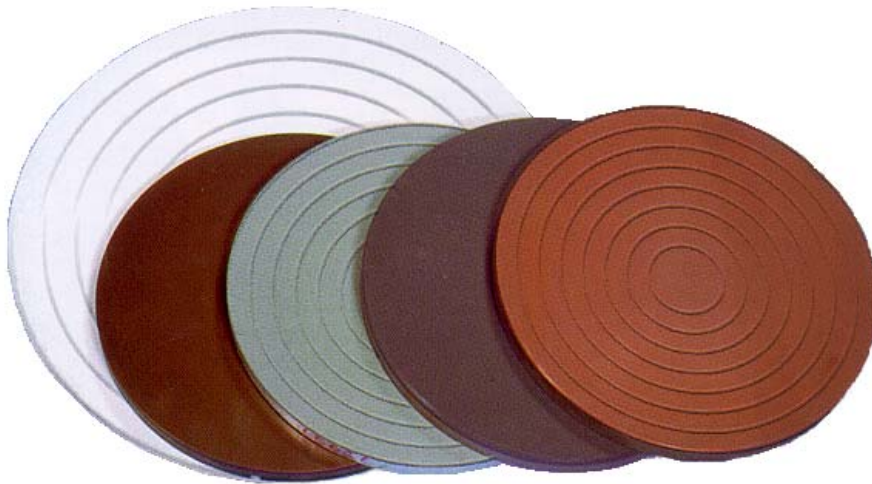


# Kemet

## Kemet<sup>®</sup> Lapping Plates

FOR USE WITH  
KEMET FLAT LAPPING AND POLISHING SYSTEMS



### **KEMET PLATES**

Kemet composite lapping plates are manufactured from a homogeneous mixture of synthetic resins, metal particles and other materials.

When used with Kemet Liquid Diamond, Kemet lapping plates have a number of unique features, which make them ideal for today's advanced lapping technology.

- ▲ Holds diamond particles firmly, ensuring both efficient stock removal and repetitive component surface finish.
- ▲ It has ductile qualities which cushion the diamond particles, preventing damage to the workpiece.
- ▲ Produced in varying hardness values so that even the softest material can, without impregnation, be safely lapped with diamond particles.
- ▲ Dissipates heat and prevents laminar flow of lapped surface.
- ▲ Easy control for optimum flatness.
- ▲ Lapping/polishing plates to fit all makes of lapping machines with plate diameters up to 3000mm.
- ▲ Supplied with a cast iron backing plate for maximum stability.

# Kemet<sup>®</sup> Lapping Plates

## **Kemet Iron**

The most commonly used plate. For general-purpose stock removal and lapping applications.

## **Kemet XP**

Gives improved flat polished surfaces on many materials.

Mirror surfaces can often be produced on harder materials also using this plate.

## **Kemet Copper**

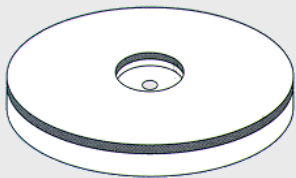
Used to lap softer materials where fine lapping and polishing are the primary requirements.

## **Kemet Tin**

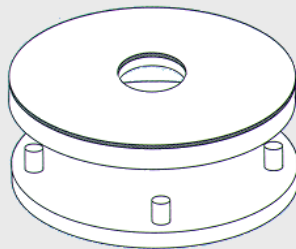
One of the softest Kemet Plates used for mirror polishing with fine grades of Kemet Liquid Diamond.

## **Kemet Ceramic**

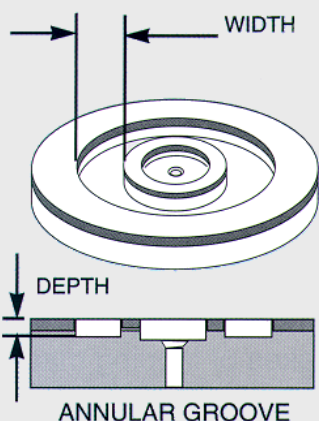
One of the hardest Kemet Plates. Used for special applications often where a cleaner lapping process is required.



STANDARD PLATE



LIFT OFF DISC ASSEMBLY



## **STANDARD KEMET LAPPING PLATES**

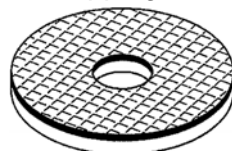
Kemet Lapping Plates are normally supplied mounted on a cast iron backing plate for maximum stability. They are recommended for general and heavy-duty work where high precision flatness and surface finish are required.

## **KEMET LIFT OFF DISC SYSTEM**

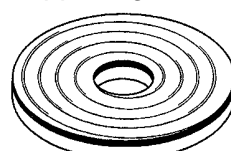
Kemet Lapping Plates are also available as Lift Off Discs, for machines up to 380mm (15") dia. Kemet Lift Off Discs are supplied mounted on an aluminium backing plate, which locates on to an aluminium drive plate by means of three pegs. Lift Off Discs can be easily changed and are recommended for light duty work where general flatness and precision finish are required.

## **GROOVING OF KEMET LAPPING PLATES**

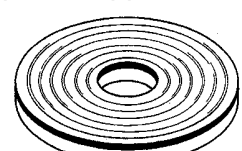
Kemet Lapping Plates can be supplied grooved to suit specific applications.



Square



Spiral



Concentric

## **KEMET ANNULAR GROOVED PLATES**

These plates have been designed for precision shoulder lapping of a wide range of parts e.g. fuel pump gear faces, pressure relief valve caps. They are available in various groove widths and depths to suit the part being lapped. *Groove width and depth need to be specified.*

**Please consult Kemet International Ltd for recommendations regarding plate specifications.**

**A refacing service for worn Kemet plates is also available from Kemet International Ltd.**

KEMET INTERNATIONAL LTD

Parkwood Trading Estate, Maidstone, Kent, ME15 9NJ, UK

Tel: 01622 755287 - Fax: 01622 670915 - Web: [www.kemet.co.uk](http://www.kemet.co.uk)



The manufacture and refacing of Kemet Lapping Plates is carried out under a Quality System registered by BSI. Cert No. Q05919 BS EN ISO 9002: 1994